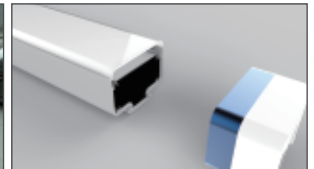
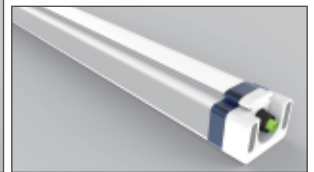
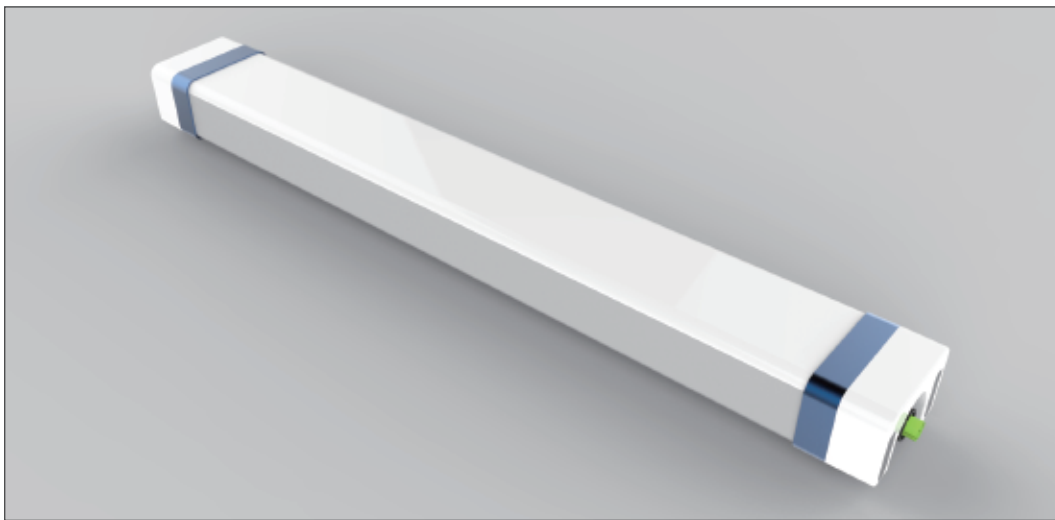


# LED Tri-proof Light SPEC PA01C





## ■ Matters needing attention

- Before installing the lighting fixtures, please read this instruction manual carefully.
- The lighting fixtures should be installed, connected and tested by a certified installer based on the local regulations.
- Lamps should always be installed or replaced with care.
- Please check the local voltage in accordance with the product requirements before using the product.
- Relamping only can be done when the power is off and the lamp is completely cooled down.
- When a lamp is to be cleaned, make the power off and let it cool down completely. Clean the fixture with a soft cloth and a standard PH neutral detergent. Stainless steel finishing should be maintained regularly.
- Misuse of, or changes to the fixture shall nullify the guarantee.
- Don't cover the fixtures with flammable materials.
- Exclusively replaced by the manufacturer or his service agent or the similar qualified person in order to avoid a hazard.

## ■ S/N Rules

S/N:ABCDEFX

1 2 3 4 5 6

EX:L07GK206511030000X

1 2 3 4 5 6

- 1 Model
- 2 PC Lens : K=Frosted T=Clear
- 3 Power : 20=20W 30=30W 40=40W 50=50W 65=65W
- 4 Color Range : 30=WW(3000K) 40=NW(4000K) 50=DW(5000K)  
60=CW(6000K)
- 5 Date : 11=2011 Year 03=March
- 6 Quantity : 00001-99999PCS

## ■ Temperature Characteristics T-ambient 25°C

### Temperature

Operating -20~+40 °C  
Storage -40~+85 °C

## ■ Electrical Characteristics

### Input Voltage:

US: AC100~277V 50/60Hz  
EU: AC100~240V 50/60Hz  
PF: ≥0.93 THD<20%  
Power Efficiency: ≥0.87



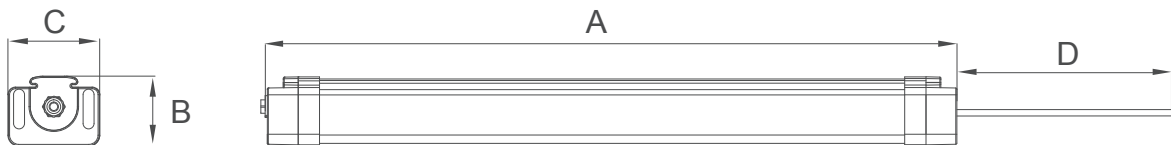
## 1. Features

- Carwash application
- Applied to corrosion application as chicken farm ,pig farm and flour mill.
- Water proof IP65 rate
- Special material for corrosion resistance
- Universal AC input 90-305VAC
- Suspending and ceiling mounted for convenient installation and maintenance
- Patented design + Brand driver+ Brand LED
- Product automatic protection (OVP OLP OTP OCP)

## 2.Application

Carwash  
 Corrosion application  
 Chicken farm  
 Pig farm  
 Flour mill

## 3.Product Dimension



Model NO.	Size A(mm)	Size B(mm)	Size C(mm)	Size D(mm)
PA01C 600mm	600	63	83	1000
PA01C 900mm	900	63	83	1000
PA01C 1200mm	1200	63	83	1000
PA01C 1500mm	1500	63	83	1000
PA01C 1500mm-A	1500	63	83	1000



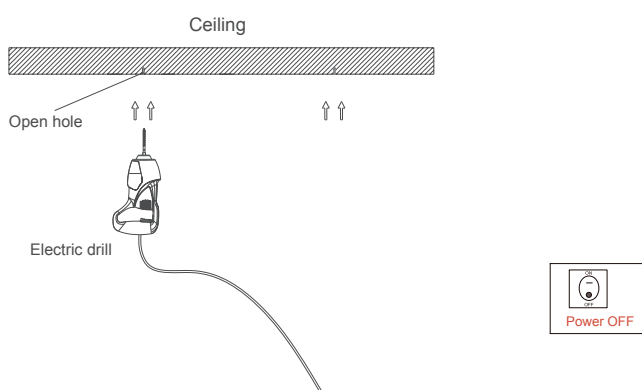
## 4. Parameter

Model NO.	Power (W)	Light Source	LED QTY (pcs)	CCT (K)	Frosted Cover Lumens	Frosted Cover Lm/W	Clear Cover Lumens	Clear Cover Lm/W	CRI	Beam Angle
PA01C/600mm	20	2835	108	4000K	1900	95	2100	105	>80	120°
PA01C/900mm	30	2835	156	4000K	2850	95	3150	105	>80	120°
PA01C/1200mm	40	2835	216	4000K	3800	95	4200	105	>80	120°
PA01C/1500mm	50	2835	264	4000K	4750	95	5250	105	>80	120°
PA01C/1500mm-A	65	2835	351	4000K	6175	95	6825	105	>80	120°

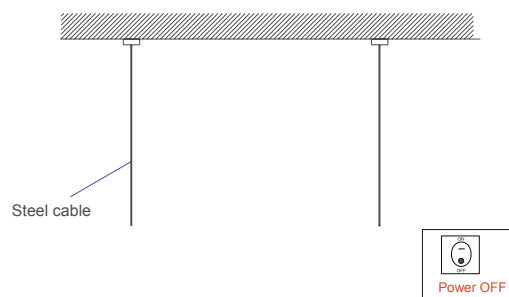
CCT Range WW(3000K) NW(4000K) DW(5000K) CW(6500K)

## 5. Installation

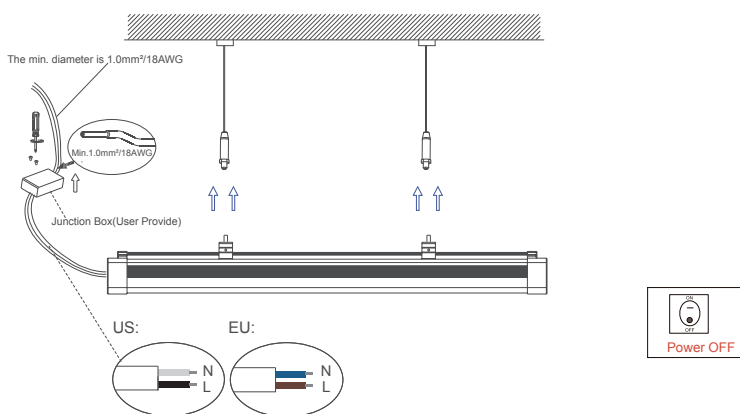
### A. Suspending



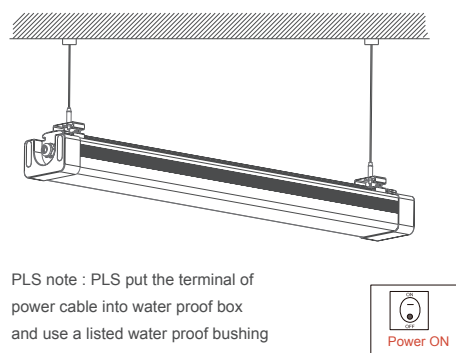
A : Make a right position and screw hole



B : Screw the steel cable onto the ceiling



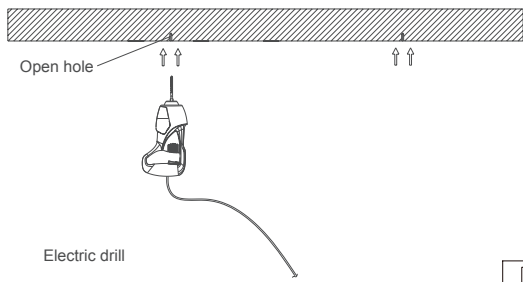
C : Hang the fixture under the steel cable and secure the fixture by steel cable



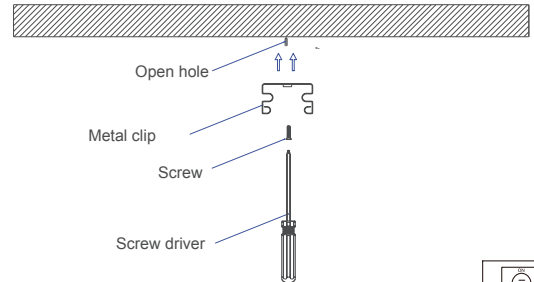
D: Adjust the position of the fixture and clean it..



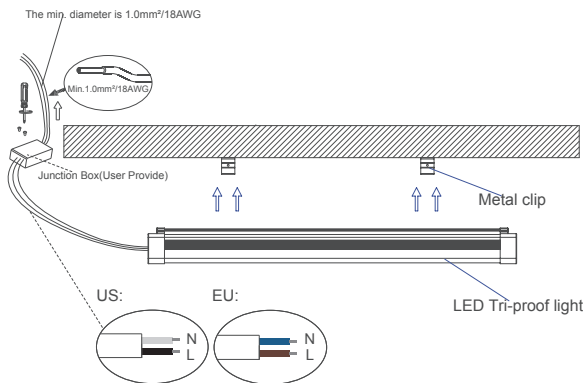
## B. Ceiling Mounted



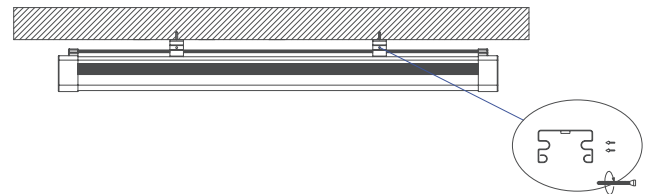
A: Make a right position and screw hole



B: Screw the clip on the ceiling tightly

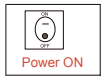


C: Install the lamp into the clips.

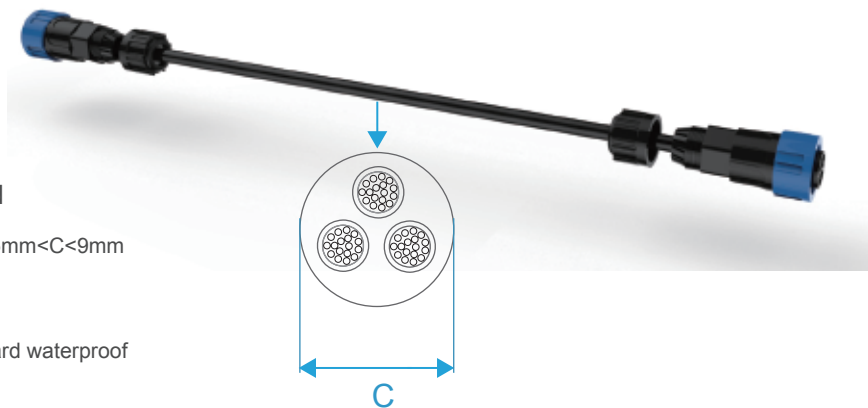
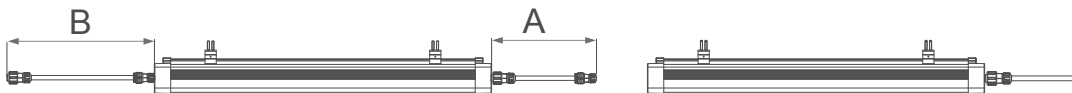


Note : pls put the terminal of power cable into water proof box and use a listed water proof bushing when you link the power

D: Adjust the position of the fixture and clean it..



## C. Linkable (Model PA01C PA01C Certification in the application)



### Cable Standard

1. Dimension :  $7.5\text{mm} < C < 9\text{mm}$
2. US: 3\*1.6AWG  
EU: 3\*1.5mm<sup>2</sup>
4. VDE UL Standard waterproof outdoor cable



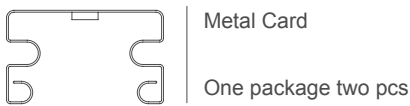
■ PLS note: About linkable" B" connectors and wire are separated, you can choose what you need the length of the wire then link to the connector tightly with screwdriver.

The maximum number of series for linkable.

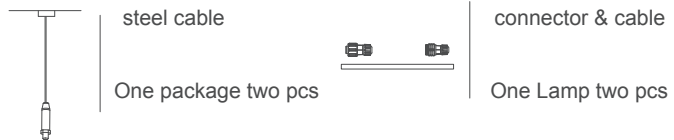
Input Voltage	PA01C Length (mm)	Max Qty	Size A (mm)	Size B (mm)
100VAC/20W	600	12	100	optional
100VAC/30W	900	8	100	optional
100VAC/40W	1200	6	100	optional
100VAC/50W	1500	5	100	optional
100VAC/65W	1500	4	100	optional

Input Voltage VAC	PA01C Length (mm)	Max Qty	Size A (mm)	Size B (mm)
230VAC/20w	600	24	100	optional
230VAC/30w	900	16	100	optional
230VAC/40w	1200	12	100	optional
230VAC/50w	1500	10	100	optional
230VAC/65w	1500	8	100	optional

■ Pls note : Above installation“ B” belongs to our standard installation, if you want to choose our way of “A” and “C” installation then you need to select our optional accessories and pay.

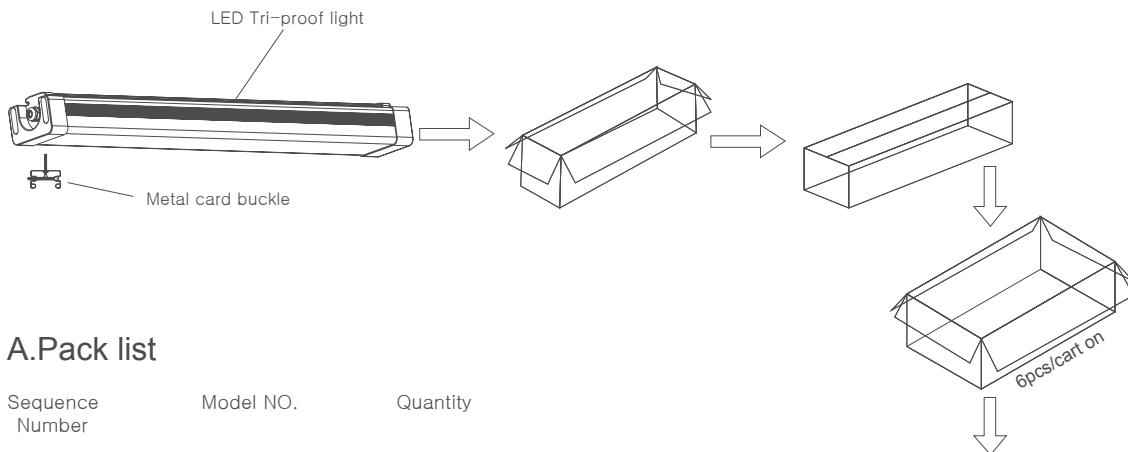


Standard accessories



Optional accessories

## 6.Packaging



### A.Pack list

Sequence Number	Model NO.	Quantity
1	LED Tri-proof light	1pc
2	Metal card buckle	2pcs
3	Manual	1pc



## B.Packing Data

Model No	Single Box	Pcs/CTN	N .W. / pcs (kg)	G .W. /CTN (kg)	Meas (mm)
PA01C 600mm	1	6	1.877	12.362	720x300x190
PA01C 900mm	1	6	2.579	17.074	1020x300x190
PA01C 1200mm	1	6	3.342	22.152	1320x300x190
PA01C 1500mm	1	6	4.096	27.086	1620x300x190

## 7.Attention

This specification is for reference only,we reserve the right to change without notice.If you need the updated info,please contact local distributors or visit our website at <http://www.ervan.cn>